



# TOTALFLEX<sup>®</sup>

# MORTAR THAT WORKS AS HARD AS YOU DO



#### ULTRA-VERSATILITY

Complete 99% of applications  
with one product



#### ULTRA-LONG OPEN TIME

Up to 60 minutes - install more  
tile in less time



#### NO SAG, NO SLUMP

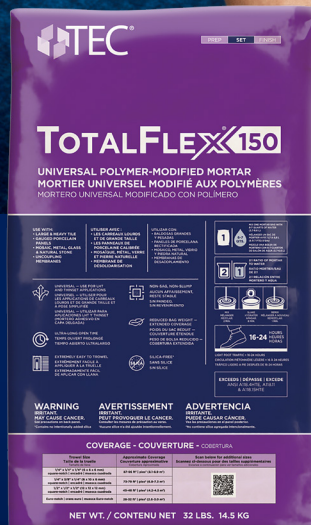
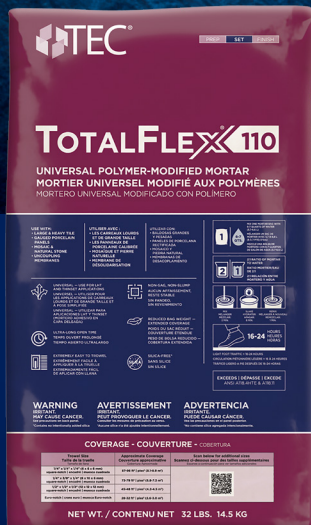
Holds and stays in place until  
mortar cures



#### SUPER EASY TO TROWEL

Thixotropic (shear thinning),  
means less physical work

# TOTALFLEX<sup>®</sup>



**REDUCED BAG WEIGHT  
& EXTENDED COVERAGE**  
Easier job site handling





# TotalFlex® Mortars

## Imagine All The Possibilities

TotalFlex® 150 and 110 high-performance universal mortars combine maximum versatility with ultra-long open time and super-easy troweling. They are ideal for large heavy tile (LHT), gauged porcelain panels, thin-set applications, and uncoupling membranes. TotalFlex mortars provide new possibilities to improve tile installation efficiency, quality, and speed – all while enhancing safety with a reduced weight, silica-free\* formula.



Ultra-Long Open Time



Ultra-Versatility



Super-Easy Troweling

### THE OPEN TIME YOU NEED

Longer open time means you can install more tile in less time.



24 Minute Open Time



Up to 60 Minute Open Time

### APPLICATIONS



LHT & Gauged Porcelain



Mosaic & Glass



Uncoupling Membranes



Interior Exterior Submerged



In-Floor Heating



Exterior Facades

### ADDITIONAL FEATURES AND BENEFITS

- **TotalFlex 150**  
Exceeds ANSI A118.15HTE
- **TotalFlex 110**  
Exceeds ANSI A118.11, and A118.4HTE
- Excellent Non-sag/slump
- Interior/exterior/submerged use
- 32 lb. bag with extended coverage

### Packaging

TotalFlex 150	TotalFlex 110
Gray 32 lb paper Product # 15030143	Gray 32 lb paper Product # 15030142
Gray 32 lb plastic Product # 15030418	Gray 32 lb plastic Product # 15030417
White 32 lb paper Product # 15036372	White 32 lb paper Product # 15036373
White 32 lb plastic Product # 15030416	White 32 lb plastic Product # 15030290

### Coverage

Coverage will vary with condition of substrate. Required trowel size will vary with the tile size, type and substrate uniformity. Select the trowel size that will ensure 100% coverage. Figures below are presented only as guidelines.

Trowel Size	Approximate Coverage
1/4" x 1/4" x 1/4" (6 x 6 x 6 mm) square-notch	87-96 sq. ft. (8.1-8.9 m <sup>2</sup> )
1/4" x 3/8" x 1/4" (6 x 10 x 6 mm) square-notch	73-79 sq. ft. (6.8-7.3 m <sup>2</sup> )
1/2" x 1/2" x 1/2" (12 x 12 x 12 mm) square-notch	45-48 sq. ft. (4.2-4.5 m <sup>2</sup> )
Euro-notch	28-32 sq. ft. (2.6-3.0 m <sup>2</sup> )*

\*Contains no intentionally added silica

### Technical Data

Physical Properties	
Description	
Physical State	Dry powder
Color	Available in white and gray
Open Time	Up to 60 minutes
Pot Life	3-4 hours
Initial Cure [at 72°F (22°C)]	9-12 hours
Final Cure	21 days
Foot Traffic Rating (ASTM C627)	Residential to Extra Heavy Commercial (depending on substrate)
Storage	Store in cool, dry location. Do not store open containers.
Shelf Life	Maximum 1 year from date of manufacture in properly stored, unopened package.



Scan for Online Coverage Calculator

Conforms with LEED® v4 low emitting interiors. Compliant with (CDPH) Standard Method v1.2 VOC Emissions.



To learn more, visit [tecspecialty.com](https://www.tecspecialty.com)



TEC Specialty Products LLC  
1105 South Frontenac Street  
Aurora, IL 60504-6451



@TECInstallationSystems



tecinstallationsystems



TECInstallationSystems



TEC Installation Systems

©Copyright 2025 TEC Specialty Products LLC  
TEC, the TEC logo and TotalFlex are trademarks of  
TEC Specialty Products LLC

SSTTFM R0925-16