



## Proper application method for TEC® Flexera® Vinyl Flooring Spray Adhesive

### DATE

March 2022

This document for the TEC® Flexera® Vinyl Flooring Spray Adhesive is to show the proper method of application of the adhesive.

The directions on the Product Data Sheet (PDS) state:

“Spray adhesive between 2 feet and waist height from the substrate in a lace pattern for optimal coverage. The adhesive pattern should cover 100% of the substrate.”

The proper application (image 1 below), shows “lace” pattern.

Improper application (image 2 below), holding the can too close to the substrate, can result in too much adhesive.

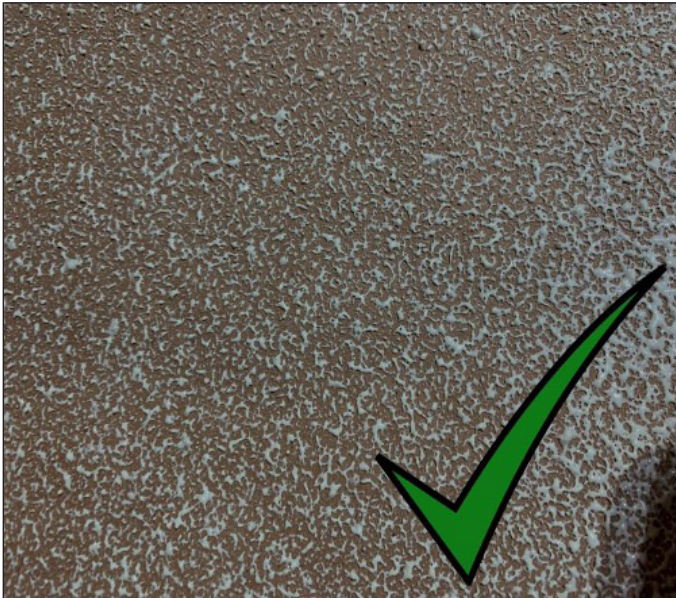


Image 1: Proper adhesive pattern



Image 2: Improper adhesive application

### Questions?

Call the Technical Support Hotline at 1-800-832-9023.

This Technical Bulletin has been prepared in good faith on the basis of information available at the time of publication. It is intended to provide users with information about and guidelines for the proper use and application of the covered TEC brand product(s) under normal environmental and working conditions. Because each project is different, H.B. Fuller Construction Products Inc. cannot be responsible for the consequences of variations in such conditions, or for unforeseen conditions.

To learn more, visit [TECspecialty.com](https://www.tecspecialty.com)



H.B. Fuller Construction Products Inc. | 1105 South Frontenac Street Aurora, IL 60504-6451