



Preformed Components

1. PRODUCT NAME

TEC® Preformed Components

2. MANUFACTURER

H.B. Fuller Construction Products Inc.
 1105 South Frontenac Street
 Aurora, IL 60504-6451 U.S.A.
 800.552.6225 Office
 800.832.9023 Technical Support
 800.952.2368 Fax
 tecspecialty.com

3. DESCRIPTION

TEC® preformed shower components make bathroom installations efficient. It's easy to install and simple to measure. Cut, place and fasten in minutes. These preformed products, when used along with the complete line of TEC® installation products, result in a water-tight shower system.

Key Features and Benefits

- Ideal for showers, kitchen nooks, pools or wet areas.
- Consistent, preformed design saves time; perfect for multi-unit facility construction, custom home building or remodeling.
- Easy to install; ready-to-tile within minutes; design allows for tiling with the same tile as on the main wall, as desired.
- One-piece construction does not absorb water, won't leak, rot or degrade; mold, mildew and moisture resistant.
- Coated with an IAPMO approved, waterproof membrane that meets ANSI A118.10.
- TEC® System limited warranty available.

Packaging/Quantities

PF-301 square niche, 1/box 12" (30,48 cm)*	Product #3703488111
PF-304 wide combo niche, 1/box 12" H x 12" W (30,48 cm x 30,48 cm)* 6" H x 12" W (15,24 cm x 30,48 cm)*	Product #3703528111
PF-305 narrow combo niche, 1/box 12" H x 6" W (30,48 cm x 15,24 cm)* 6" H x 6" W (15,24 cm x 15,24 cm)*	Product #3703538111
PF-306 rectangle niche, 1/box 12" H x 20" W (30,48 cm x 50,8 cm)*	Product #3703548111
PF-309 medium combo niche, 1/box 12" H x 8" W (30,48 cm x 20,32 cm)* 6" H x 8" W (15,24 cm x 20,32 cm)*	Product #3703578111
PF-102 slopes, 28/box 24" x 48" (60,96 cm x 121,92 cm)	Product #3703498111
PF-201 curb, 12/box 48" or 4' length (121,92 cm or 1,22 m length)	Product #3703508111
PF-202 curb, 6/box 96" or 8' length (243,84 cm or 2,44 m length)	Product #3703518111
PF-402 seat, 1/box 16" (40,64 cm) triangle	Product #3703588111
PF-403 seat, 1/box 23" (58,42 cm) triangle	Product #3703598111

* NOTE: All nominal dimensions are of the interior cavity. All niches are designed for 16" (40,64 cm) o.c. walls.

Limitations

- Must use a TEC® IAPMO approved waterproofing membrane, such as HydraFlex™ Waterproofing Crack Isolation Membrane.

Cautions

Read complete cautionary information printed on product container prior to use. For medical emergency information, call 1-888-853-1758.

This Product Data Sheet has been prepared in good faith on the basis of information available at the time of publication. It is intended to provide users with information about and guidelines for the proper use and application of the covered TEC® brand product(s) under normal environmental and working conditions. Because each project is different, H.B. Fuller Construction Products Inc. cannot be responsible for the consequences of variations in such conditions, or for unforeseen conditions.

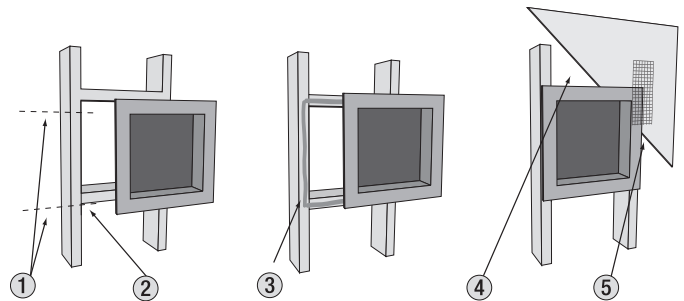
4. TECHNICAL DATA

Physical Properties

TEC® Preformed Components	
Description	
Coating	Meets ANSI A118.10. Meets IAPMO approval.
Construction	High density foam

5. INSTALLATION INSTRUCTIONS

Installation: Niches New Construction

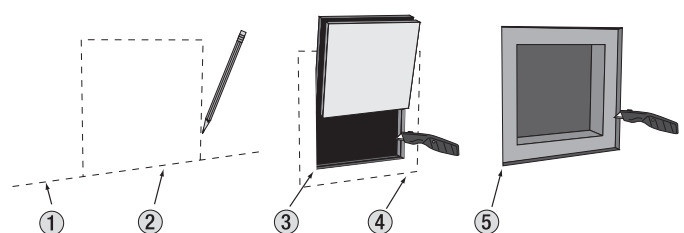


1. Position niche and mark the top and bottom of the flange between two studs (located 16" on center).
2. Nail two horizontal braces between vertical studs (optional).
3. Caulk to cross bracing studs using a TEC® IAPMO approved waterproofing membrane, such as HydraFlex™ Waterproofing Crack Isolation Membrane.
4. Install cement backerboard around and butt to the niche.
5. Cover the joint and seal all the edges between the niche and the backerboard with the fiberglass mesh embedded in latex modified mortar or a TEC® IAPMO approved waterproofing membrane.

Installation: Niches One Substrate Layer

1. Draw level pencil line on outside substrate layer.
2. Place niche with the bottom flange of the box centered on the level line.
3. Trace exterior flanges. Cut along line and remove panel.
4. Caulk to cross bracing studs using a TEC® IAPMO approved waterproofing membrane, such as HydraFlex™ Waterproofing Crack Isolation Membrane, and latex modified mortar (follow Step 5 above).

Installation: Niches Two Substrate Layers



1. Draw level pencil line on outside substrate layer.
2. Place bottom of niche centered on the line and trace outline of niche back.
3. Cut through both layers along line and remove panel.
4. Place niche into opening and trace exterior flange.
5. Remove niche, cut through outside layer only and remove picture frame outline.
6. Set in place using a TEC® IAPMO approved waterproofing membrane, such as HydraFlex™ Waterproofing Crack Isolation Membrane, and latex modified mortar (follow Step 5 above).

NOTE: Allow mortar or waterproofing to "dry to the touch" before installing tiles/stucco or other surface materials.

Installation: Slopes

1. Measure and locate center of shower pan drain.
2. Measure from the center of the drain to the shower corners.
3. Cut pre-slope panels to length.
4. Cut around drain flange and position all pieces.
5. Install pan liner as recommended by TCA Handbook at least 3" (7,62 cm) above curb.
6. Plug the inside of the drain pipe and fill the shower pan with water for 24 hours. Repair leaks before proceeding.
7. Float a 1½" (3,81 cm) mortar bed on top of the pan liner, using TEC® XtraFlex™ Acrylic Latex Additive mixed in mortar bed made according to ANSI A108.10. Let cure 24 hours.
8. Install tile.

Installation: Curbs

1. Install TEC® PF-102 slope taper boards.
2. Install a TEC® IAPMO approved waterproofing membrane, such as HydraFlex™ Waterproofing Crack Isolation Membrane or shower pan liner, over curb superstructure, waterproofing the shower floor.
3. Cut TEC® PF-202 curb to opening dimensions.
4. Coat top of curb structure with a TEC® Thin Set Mortar and place preform curb over pan liner.
5. Make sure curb rests completely on superstructure with thin set coating to provide a leveling and/or supporting plane.
6. After curb is leveled, place nail/washer fasteners through outside apron of curb.
7. Seal with TEC® AccuColor 100® 100% Silicone Sealant at all wall and pan liner interfaces.
8. Install tile.

Installation: Shower Seats

1. Dry fit the seat to be sure it fits snug against the walls. Walls must be square and plumb.
2. Remove seat and completely waterproof the wall and floor behind the seat with a TEC® IAPMO approved waterproofing membrane, such as HydraFlex™ Waterproofing Crack Isolation Membrane. Allow the TEC® HydraFlex™ Waterproofing Crack Isolation Membrane to dry completely.
3. Apply TEC® XtraFlex™ Acrylic Latex Additive mixed in a medium mortar bed made according to ANSI A108.10 to the wall and floor behind the bench using a ½" x ½" (1,27 cm x 1,27 cm) square notch or ⅜" (1,51 cm) half moon trowel.
NOTE: On the wall, trowel the mortar horizontally; slide the bench in the mortar and embed into the mortar on the floor, achieving complete coverage.
4. Once the TEC® mortar bed is set, tape all of the seams of the bench with a TEC® IAPMO approved waterproofing membrane, such as HydraFlex™ Waterproofing Crack Isolation Membrane and TEC® Waterproofing Mesh.
5. Install tile.

6. AVAILABILITY

TEC® tile and other hard surface preparation and installation products are available nationwide. To locate TEC® products in your area, please contact:
Phone: 800-832-9002
Website: tecspecialty.com

7. LIMITED WARRANTY

The product(s) covered by this Product Data Sheet are sold subject to a Limited Warranty and related terms. H.B. Fuller Construction Products disclaims the implied warranties of merchantability and fitness for a particular purpose and all incidental and consequential damages arising out of the sale, purchase or use of this product. For Limited Warranty details visit tecspecialty.com. To obtain a hard copy of the Limited Warranty call H.B. Fuller Construction Products at 800-832-9023 or mail a written request to the address in Section 2 of this Product Data Sheet.

8. MAINTENANCE

Not applicable.

9. TECHNICAL SERVICES

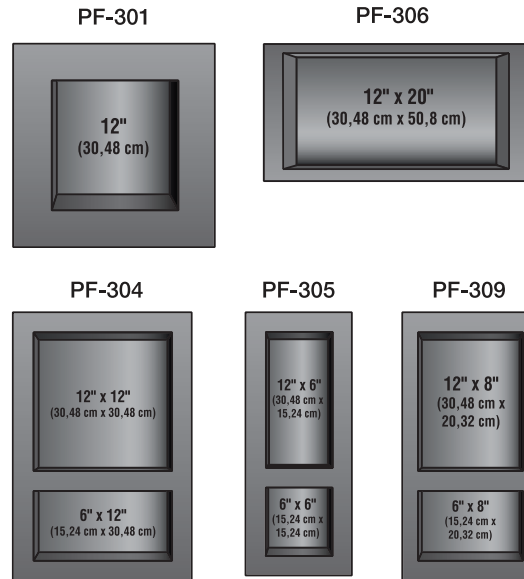
Technical and safety literature

To acquire technical and safety literature, please visit our website at tecspecialty.com.

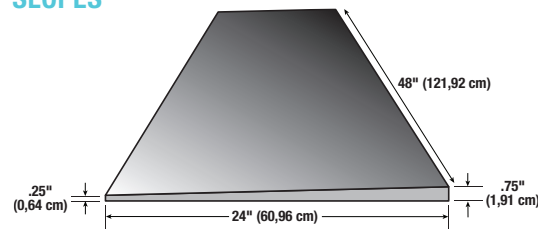
10. FILING SYSTEM

Division 9

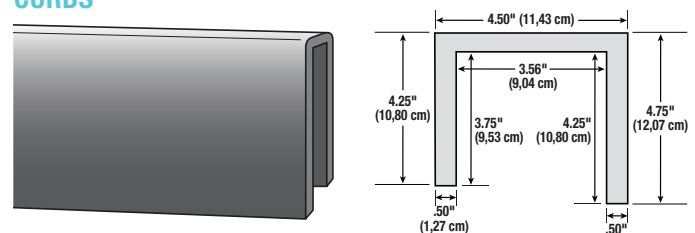
NICHES



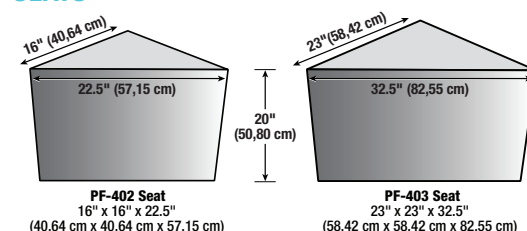
SLOPES



CURBS



SEATS



THIS PAGE LEFT INTENTIONALLY BLANK

tecspecialty.com